



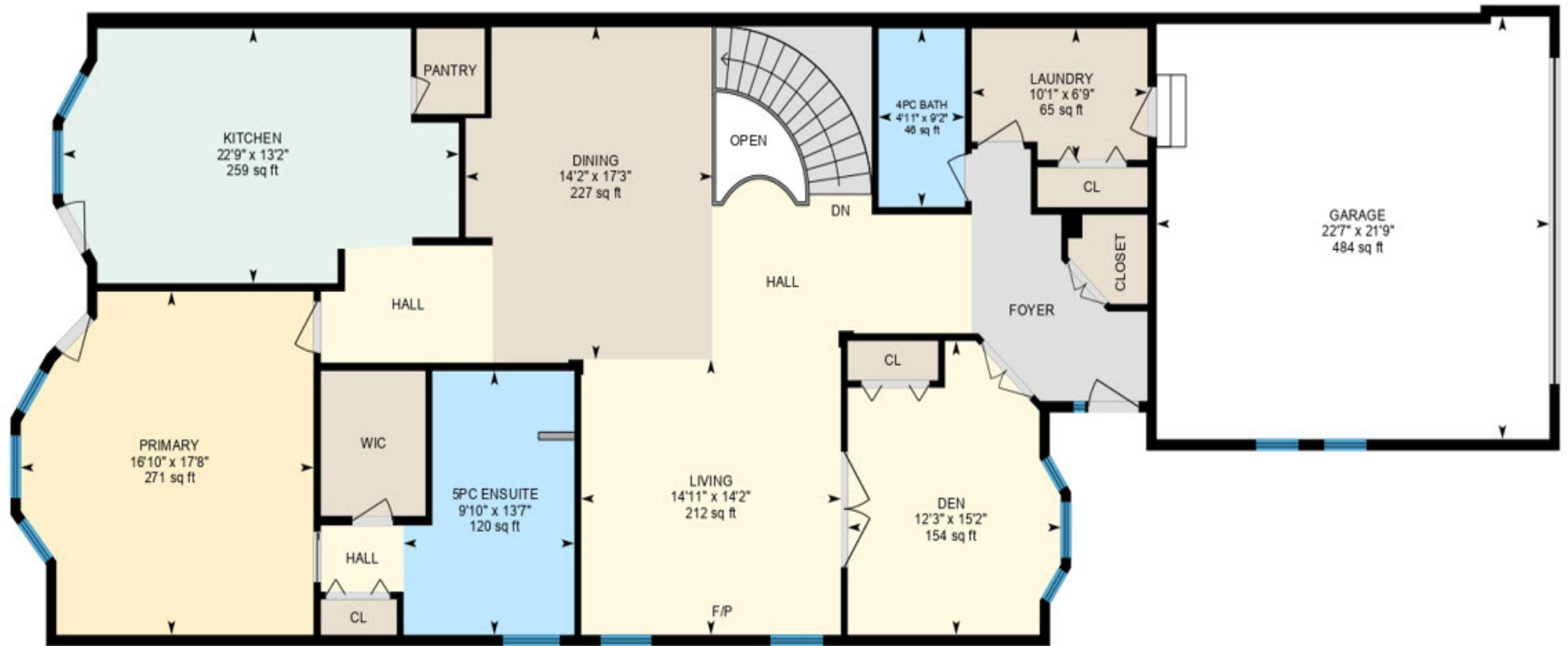
39 PROMINENCE POINT SW

Stunning Bungalow Villa With Walk-Out In The Brickburn - Patterson!

## 2 Bedrooms | 3 Bathrooms



# MAIN LEVEL FLOOR PLAN - 1,866 SQ FT



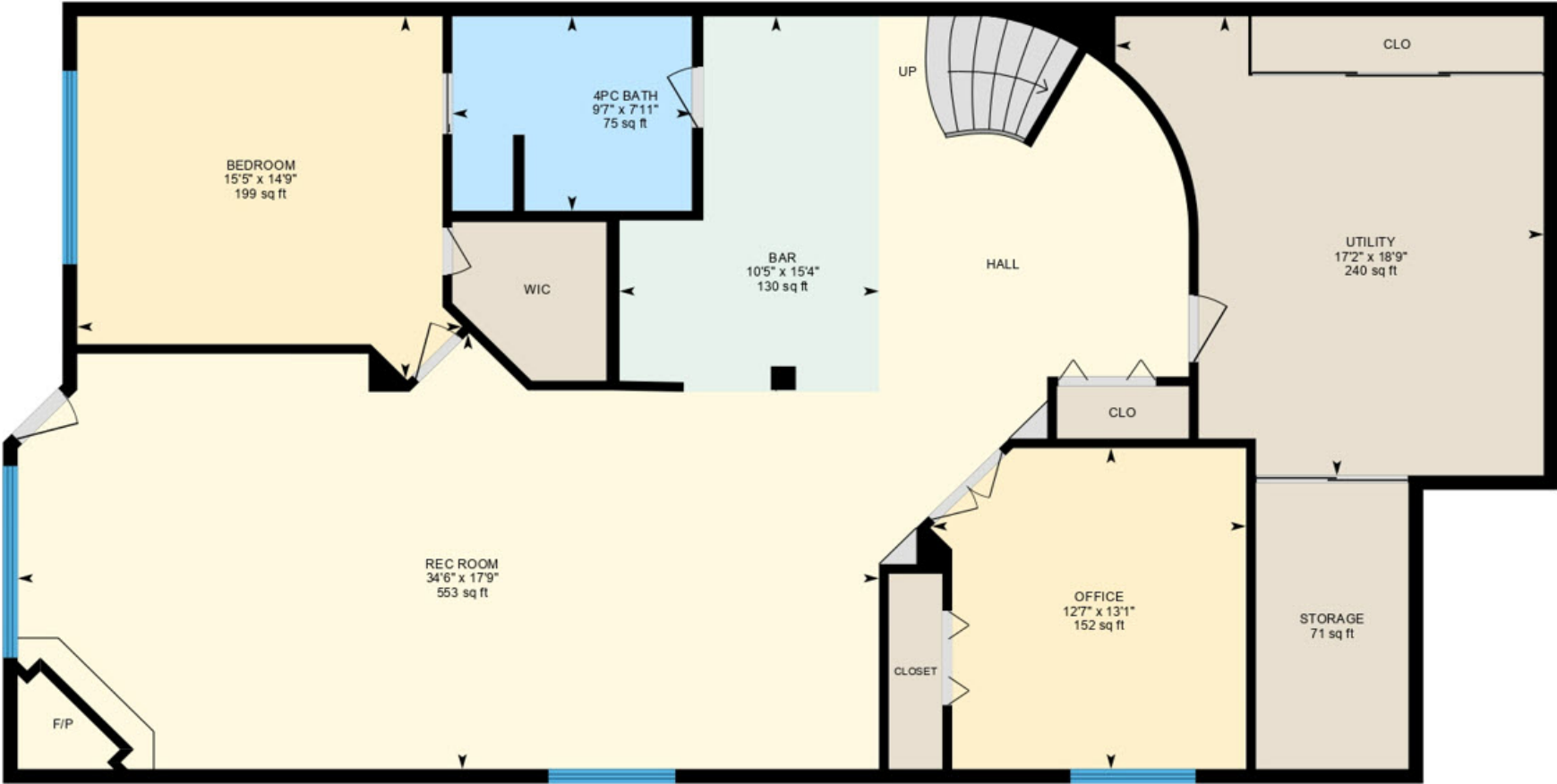


# MAIN/UPPER LEVEL FLOOR PLAN - TOTAL 1,866 SQ FT





LOWER LEVEL FLOOR PLAN - TOTAL 1,773 SQ FT





## PROPERTY DETAILS

**Taxes** \$4,890 - 2022

**Roof** Asphalt Shingles

**Heating** Forced Air/HVAC System

**Year Built** 1997

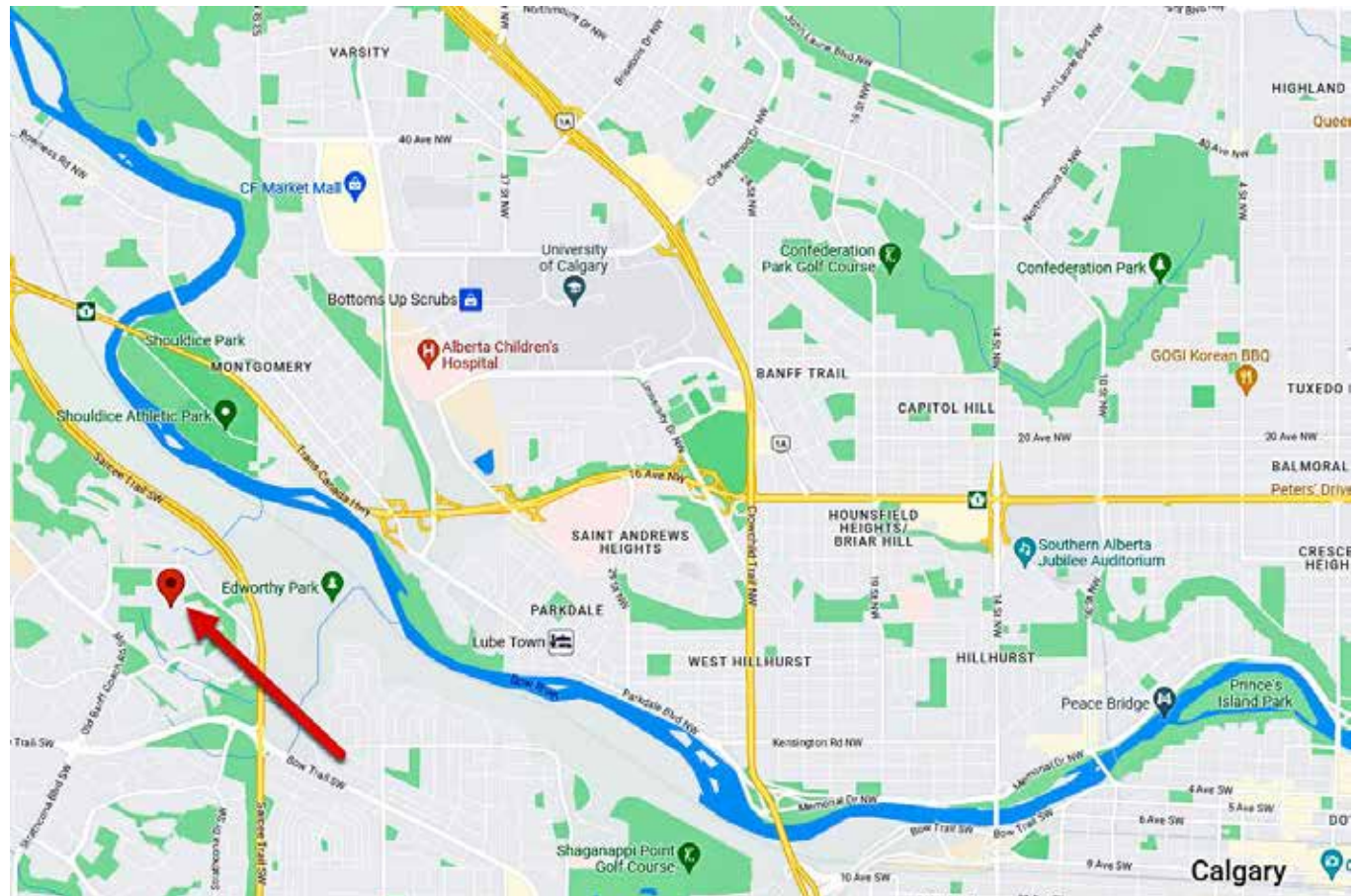
**Lot Size** 37' x 142' (11.28m x 43.28m)

**Land Use** R-C2

**Style** Bungalow - 1,866 SF

**Parking** Double Attached Insulated

**Inclusions** Built-In Oven, Dishwasher, Electric Cooktop, Electric Oven, Garburator, Range Hood, Refrigerator, Water Softener, Window Coverings, Garage Control(s), Garage Opener



**Deric A. Burton** 403.248.4000 | [deric@dericburton.com](mailto:deric@dericburton.com)  
REALTOR

**real**  
Real Broker